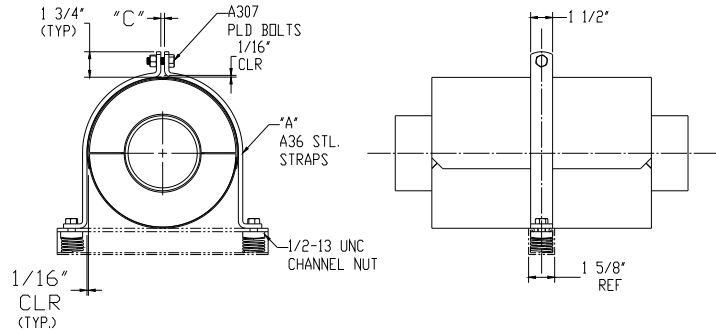




MODEL G 2000 Pipe Clamp Shield Guide Strap



| Pipe Size | Maximum Lateral Load - Lbs |
|-----------|----------------------------|
| 3/4 | 200 |
| 1 | 200 |
| 1-1/4 | 200 |
| 1-1/2 | 200 |
| 2 | 400 |
| 2-1/2 | 400 |
| 3 | 400 |
| 3-1/2 | 400 |
| 4 | 400 |
| 5 | 400 |
| 6 | 400 |
| 8 | 400 |
| 10 | 400 |
| 12 | 400 |

TABLE I

| Insulation Thicknesses |
|------------------------|
| 0 |
| 1/2 |
| 3/4 |
| 1 |
| 1-1/2 |
| 2 |
| 2-1/2 |
| 3 |
| 3-1/2 |
| 4 |

TABLE II

Contact factory for pipe sizes or insulation thicknesses not shown.

Note: For neoprene lined straps, see: G2200; For pipe/shield clamps, see: G1000; For U-bolts, see: G3000

Insulation and Framing Channel sold separately.

Application:

Model G2000 is designed for use on:

- Hot Water
- Cold Water
- Chilled Water
- Dual Temperature
- Steam
- Air
- Gas
- Vacuum

Intended for installation on:

- Standard 1-5/8" width Framing Channels

Features:

- Easy installation
- Rugged
- Bolt to standard 1-5/8" width framing channel
- Sized to clamp on O.D. of bare pipe
- Sized to provide approximately 1/16" radial clearance around O.D. of insulated pipe support models A1000 through A7400
- Complete with top bolt and nut plus two (2) tie down bolts and channel nuts with springs
- Other sizes available on request

Material Data:

- G2000: Applicable P SI specification document: No. 208.
- Steel: ASTM A36 1/4 X 1-1/2
- Fasteners: ASTM A-307 Plate d.
- Coating: Primer coating or hot dipped galvanized d. Other coatings available upon request.

For material Submittal Sheets available.